

**REICHLE**  
TECHNOLOGIEZENTRUM

THE ART OF PERFECTION



Texturkollektion 4 Elemente

**WASSER**



## WASSER

Ein Element, das Fluch und Segen vereint. Ein Element, das für jeden Organismus auf der Erde unabdingbar ist, ein unbändiges Maß an zerstörerischer Kraft besitzt und zur Wandlungsfähigkeit beiträgt.

Ein Element, das alles andere durchdringt, verbessert, in seiner Konsistenz verändert oder gar zerstört. Wir verbinden damit Kühle, Tiefe und Feuchtigkeit aber auch eine farbenprächtige Fantasielandschaft.

Wo beginnt dieses Element und wo hört es auf? Welche Menge ist davon vorhanden und wem gehört es eigentlich? Wir denken an die Unendlichkeit des Elements, welches ständig in Bewegung ist.

Ein Element, das gegensätzlicher nicht sein könnte: weich und hart zugleich, kalt oder warm, flüssig-fließend oder verdampfend-schwebend. Tiefgründig, anpassbar, verbindend.

---

An element that combines blessing and curse. An Element that is inevitable for every organism on the earth, that has an unruly degree of destructive power and that contributes to versatility.

An element that pierces everything, improves, changes its consistency or even destroys. We link to water coldness, depth and humidity but also to powerful fantasy landscapes.

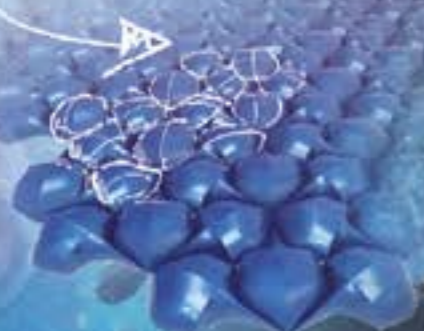
Where does this element start and where does it end? Which amount is available and who does it belong to? We think of the eternity of the element, which is in constant movement.

An element, that couldn't be more contradictory: hard and soft at the same time, cold or warm, fluid and fluent or vaporized and floating. Profound, customizable, connecting.

PUT TEXTURES ON ANY ACCESSORY



JELLYFISH INSPIRATION



USE CORAL PATTERN FOR BATH ARTICLES



CLASSIC WAVE INTERPRETATION



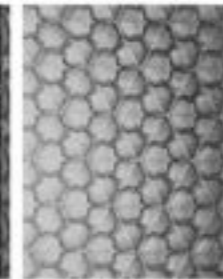
ABSTRACT SHELL DESIGNS

ICEBERG → SPECIFIC TEXTURE CHARACTER





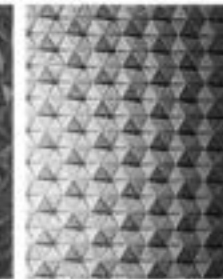
ICEFLOE



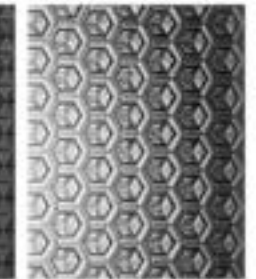
MANTA



CRYSTALS



RAINDROP



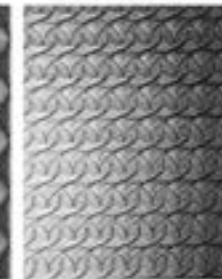
DIODON



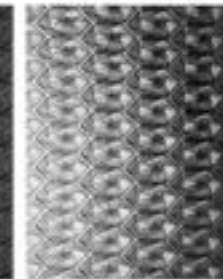
FISKENET



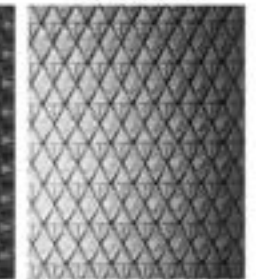
MUSSELS



WAVE



CORAL



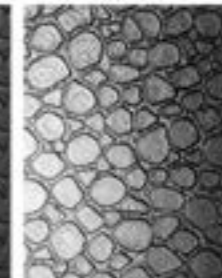
DANDRUFF



SHELL



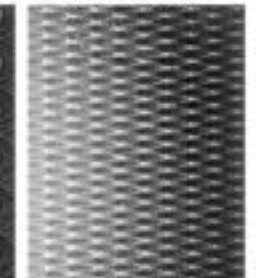
FAN



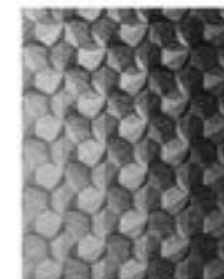
REY



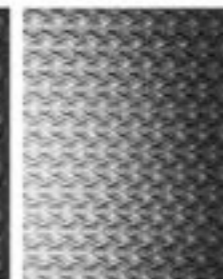
FLUCTUS



NEPTUNUS



LOTUS



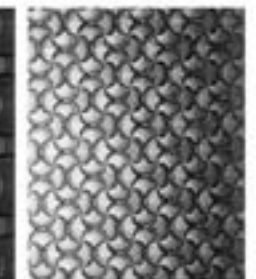
FLUE



DROPED



FLOW



CRAZE

Icefloe 100 µm | Manta 150 µm | Crystals 150 µm | Raindrop 176 µm | Diodon 125 µm |  
Fiskenet 176 µm | Musseles 250 µm | Wave 100 µm | Coral 176 µm | Dandruff 100 µm |  
Shell 110 µm | Fan 150 µm | Rey 250 µm | Fluctus 150 µm | Neptunus 110 µm |  
Lotus 160 µm | Flue 125 µm | Dropped 150 µm | Flow 200 µm | Craze 187 µm |



THE ART OF PERFECTION